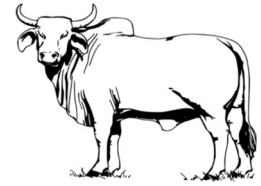


**Shell  
V-Power**



# **2018 SHELL V-POWER CATTLE COUNTRY RALLY**

**07 & 08 September 2018**

**Supplementary Regulations**

*Sponsored by:*



*Organised & Promoted by:  
Redline Motor Club*



**NMSF SANCTIONED CLUB EVENT**



## PROGRAMME

DATE	TIME	DESCRIPTION
Immediately		Opening of entries
Friday, 31 Aug 2018	19h00	Entries close
Friday, 7 Sept 2018	10h00	Start of Recce Run from Omateko Lodge, Gobabis
Friday, 7 Sept 2018	14h00 – 16h00	Documentation at Rally HQ
Friday, 7 Sept 2018	16h00	Late Entries close
Friday, 7 Sept 2018	14h00	START HOLDING AREA active at Rally HQ
Friday, 7 Sept 2018	14h00 – 16h00	Scrutineering in START HOLDING AREA at Rally HQ
Friday, 7 Sept 2018	16h30	All competing cars IN at START HOLDING AREA
Friday, 7 Sept 2018	16h30	Publication of Official Starting List
Friday, 7 Sept 2018	16h30	Drivers Briefing at Rally HQ
<b>Friday, 7 Sept 2018</b>	<b>17h00</b>	<b>Ceremonial Start – Omateko Lodge</b>
<b>Friday, 7 Sept 2018</b>	<b>17h15</b>	<b>Start Rally - Day 1 (Shell S/S, Quito Caunavale St)</b>
Friday, 7 Sept 2018	18h20	1 <sup>st</sup> Car at Service A - Omateko Lodge
Friday, 7 Sept 2018	19h51	1 <sup>st</sup> Car at Service B & Overnight rest - Omateko Lodge
Friday, 7 Sept 2018	21h00	Publication of Start times for Day 2 at Rally HQ (or when it becomes available)
Saturday, 8 Sept 2018	09h30	All competing cars IN at START HOLDING AREA
<b>Saturday, 8 Sept 2018</b>	<b>10h00</b>	<b>Start Rally - Day 2 ( Omateko Lodge, Gobabis)</b>
Saturday, 8 Sept 2018	10h55	1 <sup>st</sup> Car at Service C - Omateko Lodge
Saturday, 8 Sept 2018	12h20	1 <sup>st</sup> Car at Service D - Omateko Lodge
Saturday, 8 Sept 2018	14h00	1 <sup>st</sup> Car at Service E - Omateko Lodge
<b>Saturday, 8 Sept 2018</b>	<b>15h22</b>	<b>End of Rally (1<sup>st</sup> Car at Omateko Lodge)</b>
Saturday, 8 Sept 2018	19h30	Publication of Provisional Classification at Rally HQ (or when it becomes available)
<b>Saturday, 8 Sept 2018</b>	<b>19h00</b>	<b>Publication of Final Official Classification</b> (or when it becomes available)
Saturday, 8 Sept 2018	19h00	Prize Giving function and awards at Omateko Lodge
Saturday, 8 Sept 2018	19h00	Rally HQ closes

### RALLY HEAD QUARTERS & OFFICIAL NOTICE BOARD

Friday, 7 Sept 2018	15h00 – 22h00	Omateko Lodge, Gobabis
Saturday, 8 Sept 2018	10h00 – 19h00	Omateko Lodge, Gobabis

# INDEX

1	TITLE & STATUS OF THE EVENT	4
2	PERMIT NUMBER	4
3	PROMOTERS & SPONSORS	4
4	ORGANISATION	4
5	JURISDICTION	4
6	PLACE AND DATE OF THE EVENT	4
7	DESCRIPTION OF THE EVENT	4
8	PRACTICE AND RACE TIMES	5
9	START DETAILS	6
10	PRE START REQUIREMENTS	6
11	RESULTS	6
12	PRIZES AND AWARDS	6
13	PROTEST & APPEALS	7
14	STEWARDS OF THE MEETING	7
15	POSTPONEMENT, ABANDONMENT OR CANCELLATION	7
16	ADDITIONAL INFO REQUIRED ON ENTRY FROM	7
17	DRIVER NOMINATIONS	7
18	ENTRIES	7
19	ENTRY FEES	8
20	DRIVER'S QUALIFICATIONS	8
21	REFUSAL OF ENTRY	8
22	NUMBER OF ENTRIES	8
23	STARTING ORDER	8
24	POST RACE SCRUTINEERING	8
25	TIMING	9
26	START SIGNALS	9
27	FALSE STARTS	9
28	CREW CHANGES	9
29	CAR CHANGES	9
30	IDENTIFICATION AND PUBLICITY	9
31	JUDGES OF FACT	9
32	SCRUTINEERING	9
33	GENERAL OBLIGATIONS	9
34	GENERAL	10

## APPENDICES

ENTRY FORM	Annex – 1
ITINERARY	Annex - 2
MAIN MAP	Annex - 3

## 1. TITLE, STATUS & NATURE OF EVENT

The **2018 SHELL V-POWER CATTLE COUNTRY RALLY** will be held in and around Gobabis on 7 & 8 September 2018 as a club event of the Redline Motor Club (RLMC).

## 2. NMSF PERMIT

Permit No. **NMSF-17-130**

## 3. PROMOTERS AND SPONSORS

Promoted by: Redline Motor Club  
P O Box 21966  
WINDHOEK

Sponsored by: Shell V-Power

## 4. ORGANISATION

### 4.1 Organiser's Address

The Secretary  
Shell V-Power Cattle Country Rally  
P O Box 21966  
Fax: 061-217777  
WINDHOEK  
E-Mail: [mirtle@pznnam.com](mailto:mirtle@pznnam.com)

### 4.2 Organising Committee

Chairman	Dippies Dippenaar	0811241466
Secretary	Mirtle Vries	0812620423
Members	Riaan v/d Westhuizen	0811272256
	Myer du Raan	0811404107
	Stefan Labuschagne	0814708200
	Danie Steyn	0811280773
	Jaco Redelinghuys	0812080020
Sponsor's Representative	Johan Grobbelaar	0811436948

## 5. JURISDICTION

This Rally is to be held as a friendly club event of the Redline Motor Club under the auspices of the NMSF.

Amendments and/or changes to these Supplementary Regulations will be announced by numbered and dated Bulletins only and issued by the Organisers in conjunction with the COC and the Stewards.

## 6. PLACE AND DATE OF THE EVENT

The **2018 SHELL V-POWER CATTLE COUNTRY RALLY** will be held in and around Gobabis on Friday 7<sup>th</sup> and Saturday 8<sup>th</sup> September 2018.

## 7. DESCRIPTION OF THE EVENT

### 7.1 Route description

7.1.1	Total distance of the route	Approx. 245 km
7.1.2	Total distance of the special stages	Approx. 128 km
7.1.3	Number of Days	2
7.1.4	Number of Legs	2
7.1.5	Number of Sections	6
7.1.6	Number of Service Parks	1
7.1.7	Number of Services	5

- 7.1.8 Number of Special stages: 12  
7.1.9 Type of road surface Tar & Gravel  
7.1.10 Service parks will be in operation

**NOTE: No Road service or refueling will be allowed outside the Service Parks and Remote Service areas as indicated in the official itinerary.**

## **7.2 Fuel**

The use of Avgas and Racing **fuel** is permitted. Competitors are entirely responsible for providing and distributing their own fuel throughout the event.

## **7.3 Eligible Cars**

Vehicle classes shall be in accordance with SSR 28 Art. 2.1: 2.1.1 and 2.1.2, i.e.:

### **7.3.1 S Class**

- Class S1: up to 1600cc  
Class S2: 1601 cc up to 2000cc  
Class S3: 2001cc up to 3000cc  
Class S4: above 3000cc

Note: To determine the classification of the cars, the following factors will be applied to the engine capacity with a 5% tolerance (All these factors are cumulative on any one car)

- a) Turbo & Super charged engine – 1.4
- b) 4X4 driven vehicles – 1.4
- c) Rotary engines – 2.0
- d) 20 Valve engines – 1.2

### **7.3.2 Off Road Class**

- Class A – 4x4 6&8 cylinder vehicles  
Class B – 4x4 4 cylinder vehicles  
Class C – 2x4 6&8 Cylinders  
Class D – 2x4 4 Cylinder Vehicles  
Class E – Special build off-Road Vehicles (Eg Bat)

## **8. PRACTICE AND RACE TIMES**

### **8.1 Reconnaissance**

Reconnaissance will be allowed in the form of a single pass over the special stages in convoy using production vehicles on a time schedule leaving in 3 (three) minute intervals. Crews wishing to partake should report at the Rally HQ, Omateko Lodge, Gobabis at 09h30 on Friday 7<sup>th</sup> September 2018 for the convoy to depart at 10h00.

### **8.2 Final Administrative Checks**

Final documentation will be done at the Rally HQ, Omateko Lodge, Gobabis between 14h00 and 16h00 on Friday, 7<sup>th</sup> September 2018. Documentation can be done by a representative of the team.

### **8.3 Scrutineering**

Scrutineering will be done at the Rally HQ, Omateko Lodge, Gobabis between 14h00 and 16h00 on Friday, 7<sup>th</sup> September 2018 and can be done by a representative of the team.

### **8.4 Driver's Briefing**

Competitor's final briefing will start at 16h30 on Friday, 7<sup>th</sup> September 2018 at the Rally HQ, Omateko Lodge, Gobabis.

It should be noted that attendance of the Driver's Briefing is compulsory for all Drivers and Navigators.

## 8.5 Race

The first car will start the event at 17h00 on Friday, 7<sup>th</sup> September 2018 from Omateko Lodge, Gobabis and will finish day one at about 20h00 at Omateko Lodge in Gobabis. Day two will start at 10h00 on Saturday 8<sup>th</sup> September 2018 from Omateko Lodge in Gobabis and finish at about 16h00 at the same venue.

## 9. START DETAILS

The first competing car will leave the Ceremonial Start time control at Omateko Lodge on Day 1 at 17h00 on Friday, 7<sup>th</sup> September 2018. The remaining competitors will leave at **1 (one) minute** intervals.

The first competing car will leave the Official Start time control at Spandiens Shell Service Station on Day 1 at 17h15 on Friday, 7<sup>th</sup> September 2018. The remaining competitors will leave at **2 (two) minute** intervals.

The first competing car will leave the Start time control at Special Stage 4 (Skougronde) on Day 1 at 19h15 on Friday, 7<sup>th</sup> September 2018. The remaining competitors will leave at **5 (five) minute** intervals or as soon as the stage has been declared clean by the COC.

The first competing car will leave the Official Start time control at Omateko Lodge on Day 2 at 10h00 on Saturday, 8<sup>th</sup> September 2018 and the remaining competitors at **2 (two) minute** intervals for the remainder of the event.

**A re-group will take place for Day 2 with starting positions according to the timed results of Day 1 (Leg 1).**

## 10. PRE-START REQUIREMENTS

Only competitors who have paid the entry fee and have completed the procedure will be allowed to start.

The following will be checked at the final admin checks:

- 10.1.1 Current competition licenses for Entrant, Driver and Co-driver.
- 10.1.2 Provincial driver's licenses of Drivers and Co-drivers.
- 10.1.3 Properly completed and signed entry forms, declaration forms and indemnities.
- 10.1.4 For cross border competitors a starting permission from their local controlling body.
- 10.1.5 If vehicle was checked for eligibility (scrutineered).
- 10.1.6 The start clearance sheet, duly signed by the event secretary and scrutineer, to be handed to the start area IN marshall.
- 10.1.7 The necessary authority to change vehicle and crew, if applicable.

## 11. RESULTS

- 11.1 Results will be determined as per SSR 20
- 11.2 Provisional results will be posted at the Rally HQ at 18h30 or as soon as it becomes available.
- 11.3 Subject to protests, the provisional results will become final one half hour after the announcement of the provisional results at the same venue.
- 11.4 The prize giving function will commence as soon as possible after the results became final.

## 12. PRIZES AND AWARDS

- 12.1 The Prize Giving function will take place immediately after the Rally's finish at Omateko Lodge.
- 12.2 The list of prizes to be awarded is as follows:

Overall Classification	1 <sup>st</sup> Overall (Driver & Navigator) 2 <sup>nd</sup> Overall (Driver & Navigator) 3 <sup>rd</sup> Overall (Driver & Navigator)
Class Awards	1 <sup>st</sup> in Class (Driver & Navigator) 2 <sup>nd</sup> in Class (Driver & Navigator)

12.3 Food and drinks will be available at the prize giving venue.

## **13. PROTESTS & APPEALS**

### **13.1 Protest Fees**

Refer to the GCR's Appendix R, Clause 1.3

### **13.2 Appeal Fees**

Refer to the GCR's Appendix R, Clause 1.4

## **14. STEWARDS OF THE MEETING**

### **3.2 Stewards**

NMSF Steward	Andreas Brendel
Club Steward (RLMC)	Myer du Raan

### **3.3 Senior Officials for the Conduct of the Event**

Clerk of the Course	Dippies Dippenaar
Secretary of the Event	Mirtle Vries
Secretary's Assistants	Bronwyn Kotze, Caroline Jooste, Lee-Anne Coetzee
Route Director	Myer du Raan
Chief Control Marshall	Elmarie Scheepers
Competitors Liaison Officer	Jan Viljoen
Scrutineer	Danie Steyn
Scorers	Mirtle Vries, Bronwyn Kotze
Medical Co-ordinator	Gerrit Dames
Route Markers	TBA
Stage Closers	Jacques Booysen, Frans Meintjies
Stage Openers/Sweepers	Bielie Luck, Porra Alfaiate
0-Car	Welmie Khun, Ronald Opperman

### **3.4 Officials for Liaison with cross border competitors**

Susan Andrews	MSA Official License # 204/2017
Brian Andrews	MSA Official License # 205/2017

## **15. POSTPONEMENT, ABANDONMENT OR CANCELLATION**

Refer to GCR 244

## **16. ADDITIONAL INFORMATION REQUIRED ON ENTRY FORM**

Refer to GCR 92xvi

## **17. DRIVER NOMINATIONS**

Refer to GCR 92xvii

## **18. ENTRIES**

### **18.1 Opening and closing dates for entries**

Entries open immediately and must reach the organisers not later than Friday, 31<sup>st</sup> August 2018 at 19h00, which will be the closing date for the entries.

### **18.2 Closing date for late entries**

Closing date for late entries is Friday, 7<sup>th</sup> September 2018 at 16h00

**NOTE: Late entries are subjected to a levy of N\$500.00 and will fall in at the back of the starting list.**

### **18.3 Entry procedure**

Entries to be sent to: The Secretary of the Meeting  
2018 Shell V-Power Cattle Country Rally  
P O Box 21966  
WINDHOEK  
9000  
Namibia  
Fax: (061) 217777  
e-mail: [mirtle@pznam.com](mailto:mirtle@pznam.com)

**NOTE: a) No entry will be accepted unless submitted on the official entry form, duly completed and signed, accompanied by the appropriate fee/proof of payment.**

## **19. ENTRY FEES**

### **19.1 Entry fees**

Entry fee: R900.00 per vehicle.

The entry fee includes:

1. Official Documentation i.e.:
  - One set prescribed documentation
  - All organiser's compulsory advertising decals
  - One set Objective Route Notes (Pace Notes)

#### **19.1.2 NMSF One Event License N\$150.00**

PLEASE NOTE: An electronic version of the Objective Route Notes (Pace Notes) will be provided when it becomes available and entry has been accepted.

ORGANISERS DO NOT TAKE RESPONSIBILITY FOR OBJECTIVE NOTES. USE ONLY OBJECTIVE NOTES IF STUDIED IN CONJUNCTION WITH THE RECCE RUN!!

### **19.2 Payment procedures**

Cash Deposits/EFT's: Redline Motor Club  
Acc: 8001022102  
Bank Windhoek (Kudu Branch – 482172)  
Reference: Shell V-Power Cattle Country Rally

Please fax proof of payment to 061-217777, ATT: 2018 Shell V-Power Cattle Country Rally

### **19.3 Refunds**

Refer to GCR 113

## **20. DRIVERS' QUALIFICATIONS**

Refer to GCR 19

## **21. REFUSAL OF ENTRY**

Refer to GRC 104 & 105

## **22. NUMBER OF ENTRIES**

The maximum number of entries accepted will be to the sole discretion of the organisers.



## **23. STARTING ORDER**

Refer SSR 28 Art. 2.2

## **24. POST RACE SCRUTINEERING**

There will be a Parc Ferme in operation at the end of the event. All vehicles to be held in Parc Ferme until the results become final or when the Clerk of the Course deems fit.

## **24. TIMING**

Refer to SSR 20

## **25. START SIGNALS**

Refer to SSR 28 Art. 19.5.2

## **26. FALSE STARTS**

Refer to SSR 28 Art. 19.8

## **27. CREW CHANGES**

Refer to GCR 104 vii

## **28. CAR CHANGES**

Refer to GCR 104 vii

## **29. IDENTIFICATION AND PUBLICITY**

- 29.1 Competitors must supply their own competition numbers complying with prescribed specifications
- 29.2 The organisers will provide advertising material provided by the sponsors.
- 29.3 Any competitors not displaying advertising material provided by the organisers for the duration of the event will forfeit any trophies and prize money.

## **30. JUDGES OF FACT**

Refer GCR 163 & 164

## **31. SCRUTINEERING**

Scrutineering will be done at the Rally HQ, Omateko Lodge, Gobabis between 15h00 and 16h00 on Friday, 7<sup>th</sup> September 2018, **with special attention to GCR 239 (Safety Apparel & Equipment)**

## **32. GENERAL OBLIGATIONS**

### **32.1 Holding Areas and Time Controls**

- 32.1.1 Refer SSR 28 Art 18
- 32.1.2 A HOLDING AREA will be in operation at the start of the event. All vehicles to be in at the START HOLDING AREA 10 minutes after their scrutineering time and not later than 16h30 on Friday, 7<sup>th</sup> September 2018.
- 32.1.3 At the time controls at the end of a leg or the end of the event crews may check-in in advance without incurring any penalty. However, the time entered on the time card will be the scheduled time of the rally, not the actual time.

### **32.2 Penalties / Exclusions**

- 32.2.1 Refer SSR's 21, 22, 28 and Art. 18 & 19
- 32.2.2 Failure to present a car by 16h30 at the Start Holding Area will result in a penalty of 10 seconds per minute or fraction of a minute. Except in the case of "Force Majeure" duly recognised by the Stewards of the Meeting.
- 32.2.3 Any car not present by 16h45 will not be permitted to start.

### **33.3 Service Parks / Vehicles**

- 33.3.1 There will be 5 (five) Services at the same Service Park (Omateko Lodge). **Roadside assistance** will **NOT** be allowed. Servicing and refuelling will be limited to service parks for safety reasons.
- 33.3.2 The use of tarpaulins is compulsory in Service Parks during service
- 33.3.3 **Special attention should be given to the following with regard to service park timing:**
  - 33.3.3.1 The time clocked at Service B **IN** will be the End of Day 1 time
  - 33.3.3.2 There will be no control marshal at Service Park B OUT on Day 1
  - 33.3.3.3 Cars may not be removed from Service Park B without the consent of the COC
  - 33.3.3.4 There will be **no** control marshal at IN or OUT of the other Service Parks
  - 33.3.3.5 Service times are included in the ideal times of the Liaison Sections

### **33.4 Medical & Safety**

The telephone numbers of the hospitals / emergency services in the areas that will be covered by the event will be included in the safety plan included in the final documentation pack.

### **33.5 Indemnity**

In exchange for being able to attend or participate in the event, entrants agree:

To release NMSF, promoters, sponsor organizations, land owners and lessees, organisers of the event, officials, representatives and agents from all liability for any death, personal injury, psychological trauma, loss or damage howsoever arising from their participation in or attendance at the event, except to the extent prohibited by law; to attend or participate in the event at own risk.

### **33.6 Insurance Cover**

Included in the entry fees are cover for competitors/crew members for Public Liability under a master policy held by the Namibian Motor Sport Federation for an amount of N\$1 million, for the entire event (including scrutineering) until the posting of the final results, or prior retirement subject to policy terms and conditions.

In the event of a competitor causing damage to property the excess is payable by the entrant/competitor.

NMSF Policy No.: K0013810 (Excess amount: N\$10,000.00).

The NMSF is not liable for insurance or medical cover for cross border competitors as they are covered under their own liability/medical policy.

## **34 GENERAL**

- 34.1 The use of slick, studded or spiked tyres are prohibited.
- 34.2 The Clerk of the Course reserves the right to close up the field at the start of each stage, if necessary.

## **35 ALCOHOL CONSUMPTION:**

A NO TOLERANCE policy is maintained with regard to alcohol consumption by anyone present in the pit area. This includes mechanics, crew, representatives, supporters, family and the friends. The competitor, or in the case of a minor, his/her representative, shall be responsible for the people in their pit area. If anyone is caught consuming alcohol or being under the influence of alcohol in the pit area, it may result in immediate disqualification of the rider/competitor. This will apply even if you have finished the event.

There may be a breathalyser present at the event and breath alcohol tests may be conducted in a random fashion by the Chief Medical Officer at the discretion of the Clerk of the Course. The Clerk of the Course may also have any individual rider, competitor, crew member and representative suspected of being under the influence of alcohol, tested by the CMO.

***IF THE BREATH ALCOHOL TEST INDICATES ANY PRESENCE OF ALCOHOL, THE RIDER/COMPETITOR COULD BE EXCLUDED FROM THE RACE.***

---

**CLERK OF THE COURSE**